



天滌・BIO SANITIZER

空氣殺菌噴霧機

Air Defender

AD1000 / AD1100

使用說明書

User Manual

很感謝閣下選擇AQ天滌

AD1000/1100空氣殺菌噴霧機

將爲你帶來前所未有的個人衛生及清新空氣體驗。

本產品是專爲發揮AQ天然殺菌淨化液的強勁功能而設計，

有效降低室內含菌量和有機污染，

有效範圍約爲100平方呎(10平方米)，除殺菌和空氣消毒外，

AD1000/ 1100更能有效分解甲醛和大部份家居異味，

例如：煙味、食物味、垃圾味、等等……

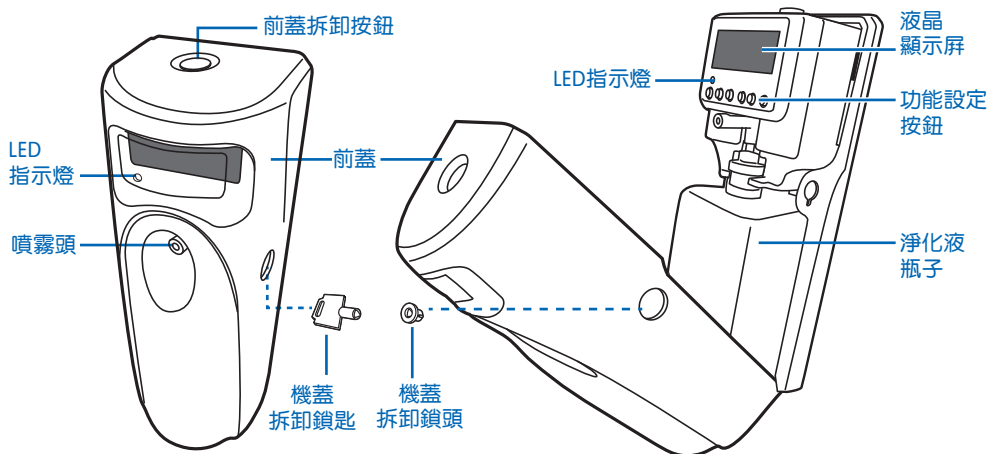
在使用本設備前，請細閱本使用說明書。

目錄

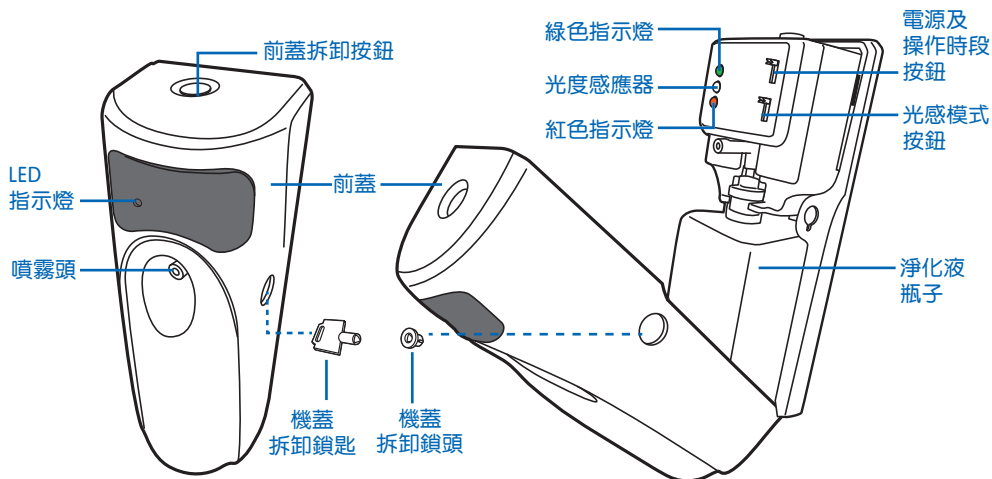
部件名稱	○
補充液體說明	○
安裝電池說明	○
AD1100操作說明	○
AD1000操作說明	○
安裝說明	○
規格	○

部件名稱

AD1000部件名稱



AD1100部件名稱

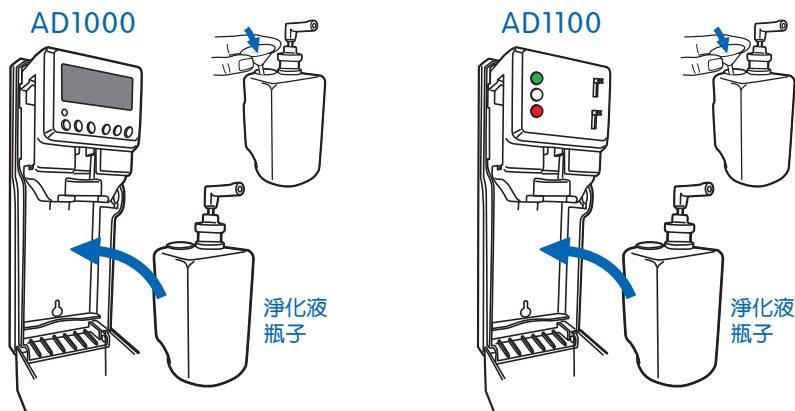


補充液體說明

- 配有專用淨化液瓶子，容量為300ml
- 每次噴出0.1ml液體，共可噴出約3000次
- AD1000用戶請留意COUNT圖標中顯示的噴霧次數，到3000次時，請即補充液體

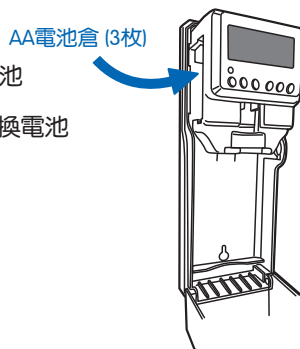
更換方法

- 用鎖匙逆時針方向旋轉一圈解鎖再拔出鎖頭
- 按下頂部機殼拆卸按鈕，輕力拉開前蓋
- 取出淨化液瓶子，注入AQ 淨化液
- 重新放入時，留意噴頭方向須與前蓋出口位置一致；合上前蓋，再用鎖匙鎖上
- 掛牆使用時，請同時檢查牢固性



安裝電池說明

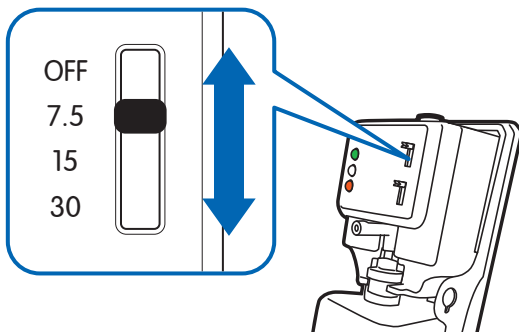
- 必需使用AA鹼性電池三枚
- 當AD1000 屏幕出現LOW，表示電量不足，請更換電池
- 當AD1100 紅色指示燈亮起時，表示電量不足，請更換電池
- 按下頂部前蓋拆卸按鈕，輕力拉開前蓋
- 安裝電池時，請留意正負極方向
- 合上外蓋



AD1100 操作說明

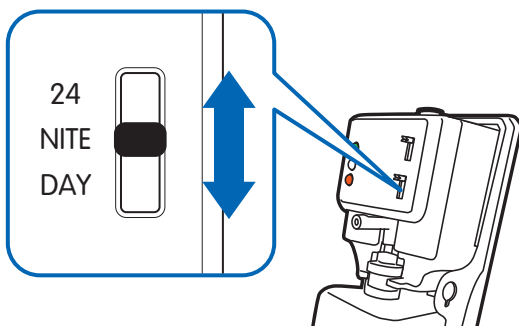
電源及操作時段按鈕

- OFF** 關閉噴霧機
- 7.5** 設定噴霧時間
為每7.5分鐘一次
- 15** 設定噴霧時間
為每15分鐘一次
- 30** 設定噴霧時間
為每30分鐘一次



光感模式按鈕

- 24** 24小時運作模式
- NITE** 夜晚模式
沒有光源時自動啟動
- DAY** 白天模式
有光源時自動啟動

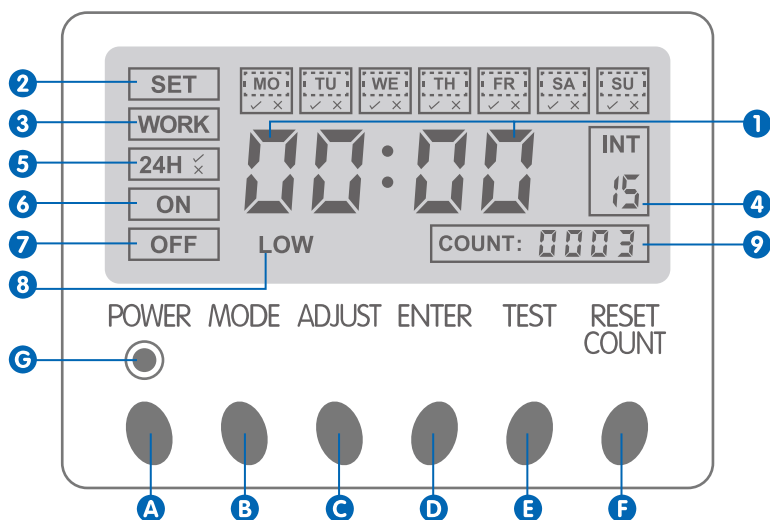


- ◉ 綠色指示燈閃爍顯示正常操作狀態
- ◉ 光度感應器會根據周邊環境的光源自動操作
- ◉ 紅色指示燈閃爍表示淨化液用完，需要補充液體，或者電量不足
- ◉ 如要測試儀器是否正常有霧化，請把電源及操作時段按鈕由OFF拉至30分鐘檔位，便知結果

AD1000 操作說明

液晶顯示屏說明

- 閃動時表示要設定鐘的時間
- 出現閃動，表示要在MO至SU設定當天的週期日子
- 出現閃動，表示要在MO至SU確定 ✓ 或 ✕，✓ 代表要運作，✕ 代表待命
- 閃動時表示在01至60分鐘內確定間隔多少分鐘噴一次。原廠設定為每15分鐘噴一次
- 閃動時表示要確定24H ✓ 或非24H ✕
- 閃動時表示要設定每日運作時間
- 閃動時表示要設定每日待命時間
- 閃動時表示電量不足或需要補充液體
- 顯示噴霧次數



按鍵說明

- **POWER 電源鍵**：按此鍵開啓或關閉電源
- **MODE 模式鍵**：按此鍵設定時間及操作時間段等
- **ADJUST 調整鍵**：按此鍵即選擇數值或選擇 ✓ 或 ✕
- **ENTER 確認鍵**：按此鍵確認選定的數值，並跳到下一步驟
- **TEST 測試鍵**：按此鍵可測試噴霧機械是否正常
- **RESET COUNT 歸零鍵**：補充液體後長按此鍵5秒可將噴霧次數計歸零，紅燈便會熄滅
- **LED LIGHT 紅綠雙色燈號**：綠燈閃動表示正常運作中，紅燈閃動表示液體用完或電量不足

- ① 設定時間按MODE鍵：
進入時鐘圖標，“小時”閃動，按ADJUST輸入小時，選好後按ENTER跳到下一步驟
- ② 按ADJUST輸入“分鐘”，選好後按ENTER跳到下一步驟
- ③ 按ADJUST在MO至SU確定當天週期日，選好後按ENTER跳到下一步驟
- ④ 按ADJUST確定（順序從MO至SU）選✓運作，選✗待命
- ⑤ 選定按ENTER，自動到下一日，即TU→WE→TH→FR→SA→SU，
選好後按ENTER跳到下一步驟
- ⑥ INT圖標閃動，按ADJUST從01-60分鐘內選定噴霧間隔時間，
選好後按ENTER跳到下一步驟
- ⑦ 按ADJUST選定✓或✗，✓代表24小時工作，✗代表非24小時工作，
選好後按ENTER跳到下一步驟
- ⑧ 按ADJUST輸入每日開始工作時間，選好後按ENTER跳到下一步驟
- ⑨ 按ADJUST輸入“分鐘”，選好後按ENTER跳到下一步驟
- ⑩ 按ADJUST輸入每日關閉工作時間，選好後按ENTER跳到下一步驟
- ⑪ 按ADJUST輸入“分鐘”，選好按ENTER，

到此結束所有設定，並開始正常運作。若未能在15秒內完成自行設定程序，屏幕將自動回復到原廠設定，需要重新開始設定程序。



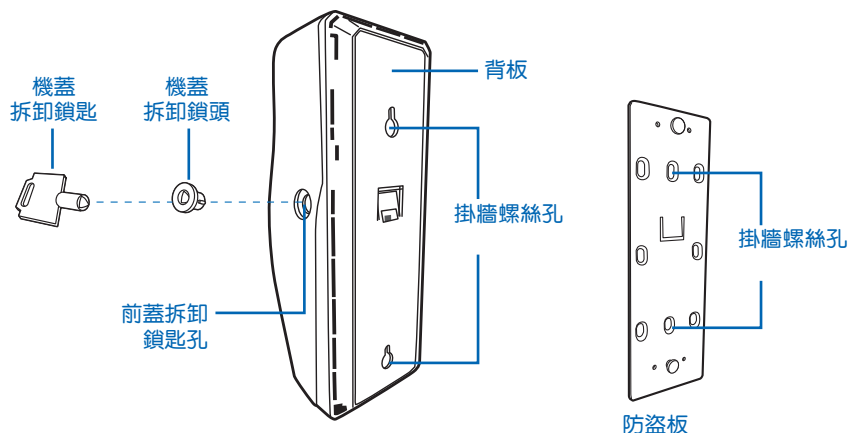
溫馨提示

- 如閣下睡覺時對聲音特別敏感，建議選擇把噴霧機安裝於睡房以外
- 如使用不合適的電池，噴霧機很可能不能正常運作及受損，
必須使用AA鹼性電池如使用不合適的電池。
- 建議把噴霧機安裝於180cm高度以上，以達致更佳霧化效果

安裝說明

- 請把噴霧機安裝於高處以達致更佳霧化效果
- 以機身外殼上的掛牆螺絲孔（機背）直接掛牆時沒有防盜功能
- 用於公眾地方時，可選用隨機附送的防盜板，以螺絲牢固地掛在牆上，然後再把機器套上即可
- 如必須選擇（但不建議）只適用於玻璃或光滑瓷磚的3M貼牆時，請明白有下掉風險，必須小心謹慎選擇不會傷及人和物品的合適掛牆位置。貼前要徹底擦乾淨，並確保沒有濕氣

AD1000/1100背面



規格

產品型號	AD1000 / AD1100
額定電壓	4.5伏特（3枚AA鹼性電池）
產品淨重	500克
有效範圍	約100平方呎（10平方米）
淨化液消耗量	每次噴灑量約0.1毫升，例：每天運作8小時，每15分鐘噴灑一次 一瓶300ml的補充液約可用90天

Thank you for choosing AQ

The AD 1000/1100 Air Defender is going to provide you with an unprecedented personal hygiene and air-freshening experience.

The machine is designed to maximize the effectiveness of AQ Bio Sanitizer.

It can effectively reduce the amount of indoor bacteria and organic pollutants within an area of around 100 ft² (10m²).

Apart from eradicating bacteria, the machine can also decompose and remove VOC and odour-causing contaminants in air.

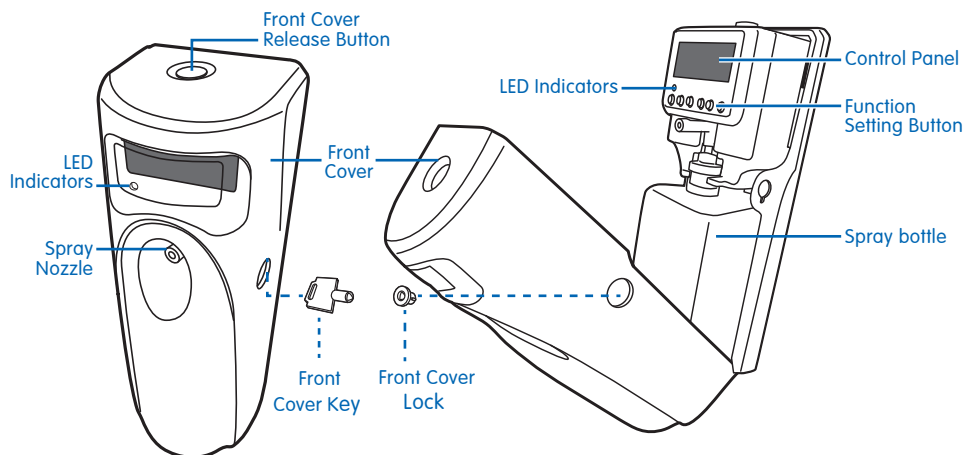
PLEASE READ THIS MANUAL THOROUGHLY BEFORE USE

Index

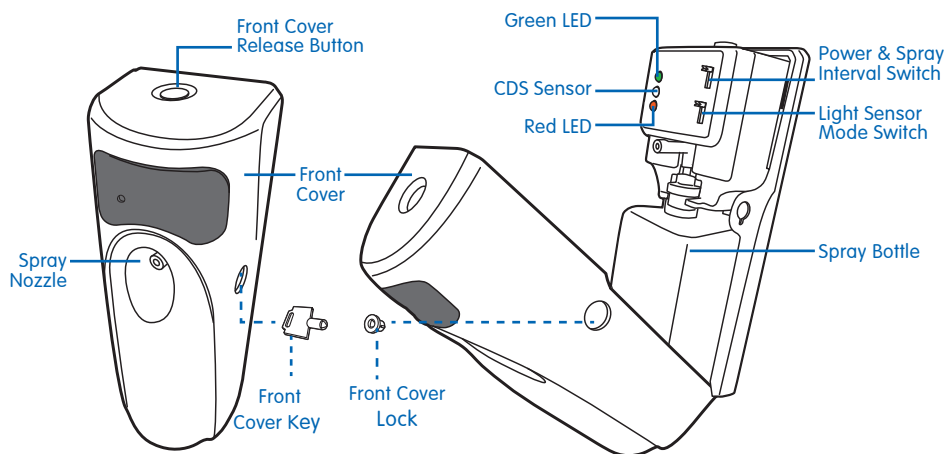
[illegible]

Parts Identification

AD1000 Parts Identification



AD1100 Parts Identification

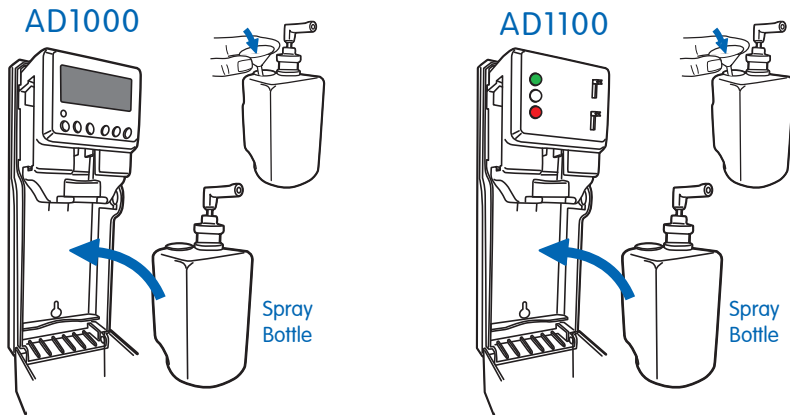


Liquid Refill

- The machine is equipped with a 300ml refill bottle
- Each spray releases 0.1 ml totalling approximately 3000 sprays for each full refill
- Please observe the COUNT display for refilling when it reaches 3000 times

Instruction for refilling the liquid

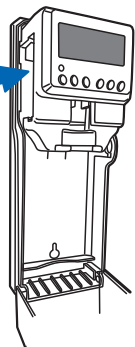
- Turn the plastic key anti-clockwise and remove the Front Cover Lock to unlock the Air Defender
- Press the Front Cover Release button on the top of the Air Defender, and gently pull the front case open
- Take out the empty bottle and refill it with 300ml of AQ bio sanitizer
- Place the refilled bottle back into the slot. Please make sure the nozzle face the opening of the cover properly. Close and lock the case
- When the Air Defender is wall-mounted, please ensure that it is hung firmly on the wall



Installing Batteries

- Three AA [alkaline](#) batteries must be used for the machine to work properly
- For AD1000, please replace the batteries when the LOW icon flashes
- For AD1100, please replace the batteries when the red LED light comes on
- Turn the plastic key anti-clockwise to unlock the Air Defender. Press the front cover release button on the top of the Air Defender and gently pull the front case open
- While installing batteries, please pay attention to the polarity
- Close the case and lock up the Air Defender with the plastic key

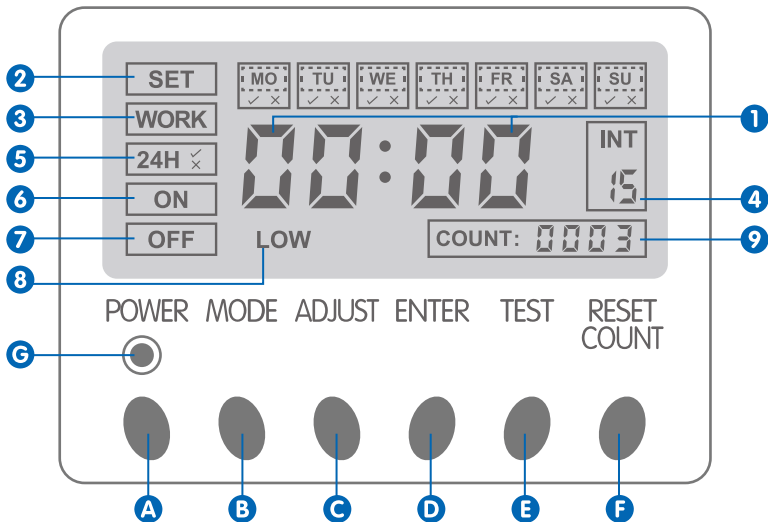
AA batteries
(3 pieces)



AD1000 Operation Instruction

LCD Display Monitor

- ① While flashing, set the current time for the clock
- ② While flashing, set the day of the week at the moment
- ③ While flashing, set the day of the week you would like the machine to work. Choosing ✓ on the day you would like the machine to work and ✗ on the day you do not want the machine to work
- ④ While flashing, set the spray interval between 01 to 60 minutes. The default setting is to spray at 15-minute intervals
- ⑤ While flashing, set whether you want the machine to work for 24 hours ✓ or do not work for 24 hours ✗
- ⑥ While flashing, set the daily ON time of the machine
- ⑦ While flashing, set the daily OFF time of the machine
- ⑧ Flashes when batteries are running low or the machine needs refilling
- ⑨ Count the number of times the machine has sprayed



Button Instruction

- ① **POWER:** Press this button to switch the Air Defender on or off
- ② **MODE:** Press this button to set the time and schedule operations
- ③ **ADJUST:** Press this button to adjust the digits, or choose ✓ or ✗
- ④ **ENTER:** Press this button to confirm the setting and move on to next step
- ⑤ **TEST:** Press to test if the spraying mechanism is functioning properly
- ⑥ **RESET COUNT:** After refill, Press and hold for 5 seconds to restore the counting record to zero and extinguish the red LED warniy
- ⑦ **LED LIGHT:** Flashing green light indicates that the machine is functioning properly and flashing red light means the liquid has been used up or battery low

- ⦿ Time setting:
Press the MODE key, the HOUR icon will start flashing. Press the ADJUST key to enter the current time (hour). Then press the ENTER key to confirm
- ⦿ Press the ADJUST key to set the current time (minute). Then press the ENTER key to confirm
- ⦿ Press the ADJUST key to set the current time (day of the week). Then press the ENTER key to confirm
- ⦿ Press the ADJUST key to choose the operation day of the week (from MO to SU); Choose ✓ on the day you would like the machine to work and choose ✗ on the day you do not want the machine to work
- ⦿ Repeat pressing the ENTER key to go on to the next operation day, i.e. TU→WE→TH→FR→SA→SU. Then press the ENTER key to confirm
- ⦿ While the INT icon is flashing, press the ADJUST key to choose the spray interval from 01 to 60 minutes. Then press the ENTER key to confirm
- ⦿ Press the ADJUST key to choose if you would like the machine to work for 24 hours a day. Choose ✓ if you want the machine to work for 24 hours a day and ✗ if you do not want the machine to work for 24 hours a day. Then press the ENTER key to confirm
- ⦿ Press the ADJUST key to set the daily operation hour. Then press the ENTER key to confirm
- ⦿ Press the ADJUST key to set the daily operation minute. Then press the ENTER key to confirm
- ⦿ Press the ADJUST key to set the stopping hour. Then press the ENTER key to confirm
- ⦿ Press the ADJUST key to set the stopping minute. Then press the ENTER key to confirm.

All the settings would have been completed at this point and the Air Defender will start to operate according to the settings. If custom setting cannot be finished and no button pressed within 15 seconds, the LCD monitor will return to factory default settings.



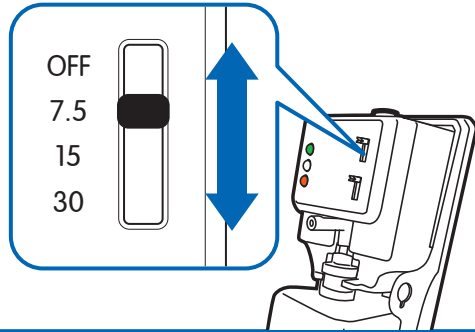
Reminder

- ⦿ If you are particularly sensitive to sound, we recommend you to install the machine outside the bedroom
- ⦿ Inappropriate batteries may cause malfunction and damage to the machine. Use AA alkaline battery only
- ⦿ Please position the sprayer 180cm above ground level for better result

AD1100 Operation Instruction

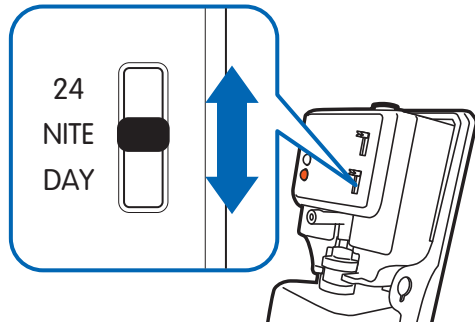
Power & Spray Interval Button

- OFF** Machine off
- 7.5** Spray once every 7.5 minutes
- 15** Spray once every 15 minutes
- 30** Spray once every 30 minutes



Light Sensor Mode Switch

- 24** 24 hours Continuous Mode
- NITE** Night Mode
the machine will turn on
automatically when there is no light
- DAY** Day Mode
the machine will turn on
automatically when there is light

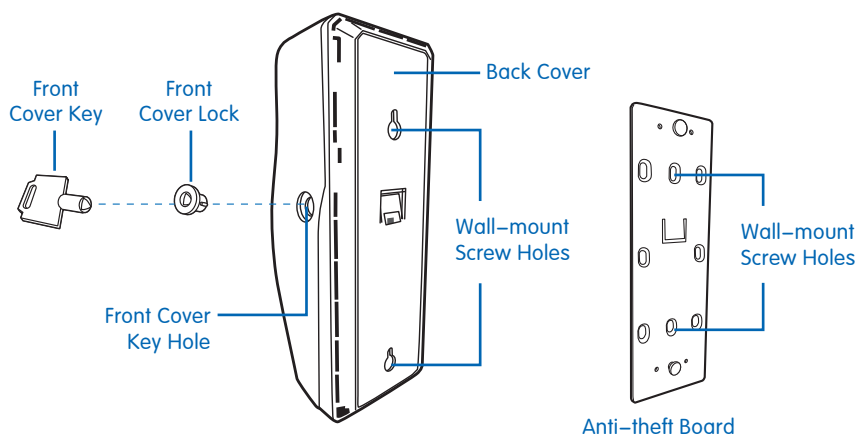


- ◉ Flashing green light indicates that the machine is functioning properly
- ◉ CDS Sensor automatically switches the machine on/off according to the illumination of the surroundings
- ◉ Flashing red light indicates that the machine may need refill or battery low
- ◉ To check whether the machine is spraying normally, switch the button from OFF to 30 Minutes

Installation

- Mount the machine at a higher position for better atomization effect
- The wall-mount screw holes on the back cover of the machine can be used to mount the machine onto the wall directly without anti-theft function
- For use in public area, mount the Anti-theft Board with screws onto the wall surface and then secure the machine onto the board firmly
- If it is necessary to choose (not recommended) to mount the Anti-theft Board with the 3M sticker onto glass or smooth ceramic tile, please be aware the mounting may fall off from the wall surface and run the risk of personal and property damage. Please choose the mounting site cautiously and thoroughly cleaned and dried the surface before mounting.

AD1000/1100 Back Cover



Specifications

Product Model	AD1000 / AD1100
Voltage	4.5V (Three AA alkaline batteries)
Net Weight	500g
Effective Coverage	Around 100 ft ² (10m ²)
Liquid Consumption Rate	Each spray consumes around 0.1ml e.g. To operate 8 hours per day at 15-minute intervals, a 300ml liquid refill may be used for 90 days

AQ 產品保養表格

AQ Product Warranty Form

姓名 Name	手提電話 Mobile No.
電郵地址 Email	
產品型號 Model No.	
銷售商名稱 Distributor	購買日期 Date of Purchase
發票號碼 Invoice No.	機身編號(如適用) Serial No. (If applicable)

(當產品需要維修保養服務時，必須提供發票正本)
(The original invoice must be presented when maintenance service is required)



條款及細則

Terms & Conditions

- 由購買日期起開始計算，閣下之已登記產品享有12個月保養期
- 當根據本保養條款提出任何申索時，閣下必須提供購買產品時的發票正本(發票需清楚標明購買日期)
- 用戶必須遵照說明書內指引使用產品，免費保養服務不包括因任何不正確使用方法導致的損壞
- 用戶在以下情況需要自行負責修理費用：
 - 該產品並非由 AQ 或其授權銷售商所供應
 - 由於水、火、意外、疏忽、使用不當或濫用、輸入不合適液體或電壓、充電池問題、正常損耗及任何擅自修理或改裝所造成之損壞
- 若產品需要維修，用戶須負責將機件送往本公司之維修中心及由中心取回產品的運輸費用
- AQ 保留一切更改或取消任何保養條款的絕對權利而毋需另行通知
- 如有任何爭議，AQ 保留最終解釋權和決定權

- Your registered product is entitled to a 12-month warranty period from the original date of purchase.
- The original invoice (with date of purchase clearly indicated) for the product must be provided when making any claim under this warranty.
- The user must follow the guidance of the user menu to operate the product. All damages caused by misuse will not be covered by this warranty.
- This warranty does not cover:
 - Product not sold by AQ or an authorized distributor.
 - Damages caused by water, fire, accident, negligence, abuse or misuse, improper liquid or voltage input, rechargeable battery problems, normal wear and tear, any unauthorized repair or being tempered with.
- Should the product require repair services, the customer is responsible for the transportation cost to and from the service centre.
- AQ Bio Technology Group Ltd reserves the right to amend or cancel any of the terms and conditions of this warranty without prior notice.
- In case of dispute, AQ reserves the right to final decision.

艾橋生物科技製造有限公司
AQ Bio Technology Manufacturing Ltd.

☎ (852)3691 9991 📞 (852) 9529 8000 📠 (852)3691 9990 ✉ office@aq-bio.com



www.AQsanitizer.com

請將表格寄回：

觀塘鴻圖道81號Contempo Place8樓 (艾橋生物科技集團有限公司收) 並於信封面註明：「AQ產品保養登記」

Please fill out this form and submit it by post marked with "AQ Product Warranty Registration" to:

AQ Bio Technology Group Ltd, 8/F., Contempo Place, 81 Hung To Road, Kwun Tong, Kowloon, Hong Kong.